

COOL HANGER

Adjustable Hanger

COOL HANGER, designed to be an appealing and easy addition to any residence or workplace. Simple and durable design, along with easy adjustability, allow for the COOL HANGER to be installed and used anywhere. Easily adjustable hooks let the customer choose spacing between the hooks that works for them. Installation can be completed with either anchors and screws, or with simple pins, offering 5kg load or 2kg load capacity respectively. High quality materials and strict quality control used in the manufacturing of the product ensure longevity and reliability our customers can depend on. Meticulously designed and tested to meet the rules and regulations, and the high expectations of the international market.



Features



Quick Installation
Easy 6-Step Installation



Install Anywhere
Easy installation, simple design & positioning variations allow for installation anywhere



Durable ASA
Made of durable ASA material



Simple Design
Simple & minimalistic design of the COOL HANGER is appealing & fits any environment/space



Adjustable Hook
Easily adjust the position of hooks across the entire length of the hanger rail



Load Capacity
Load capacity of up to 5kg/hook when installed with screws, & up to 2kg/hook when installed with pins



MADE IN JAPAN



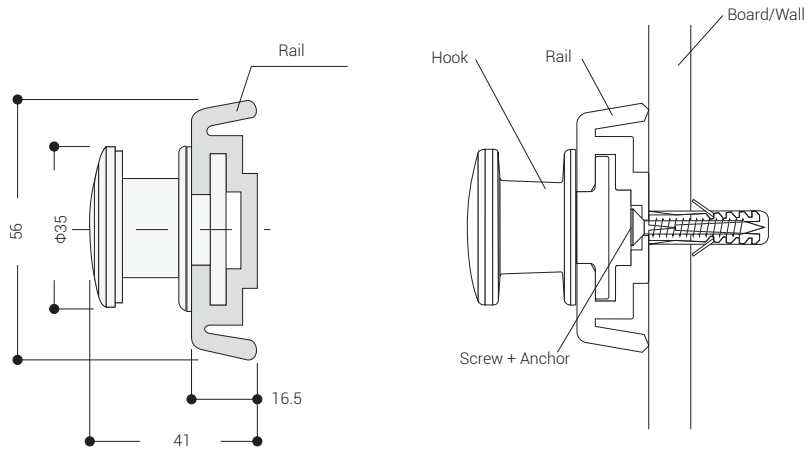
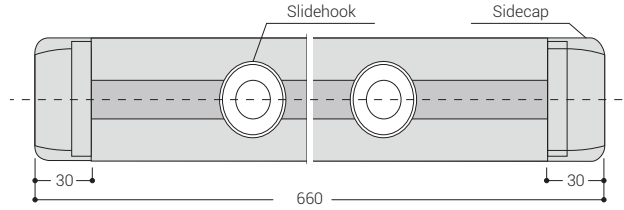
ASSEMBLED IN THAILAND



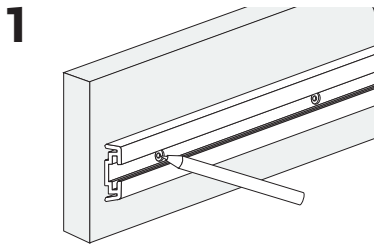
Product List

| Model | Design | Dimensions | Color | MOQ |
|-------------|--------|------------|-------|-------|
| COOL HANGER | 660 | see page 2 | White | 1 pcs |

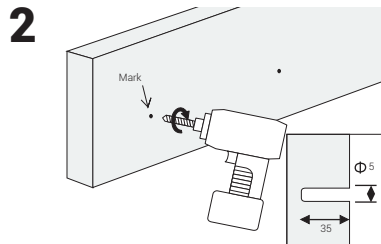
Model Design



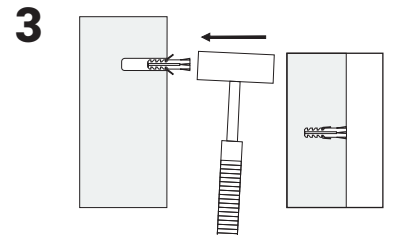
Installation Guide



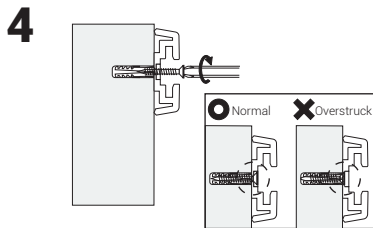
1 Position the hanger and mark the hole positions.



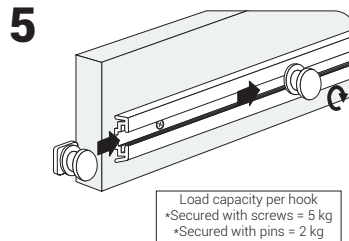
2 Drill the holes.
(Diameter 5 mm, depth 35 mm)



3 Install the anchor into the hole.

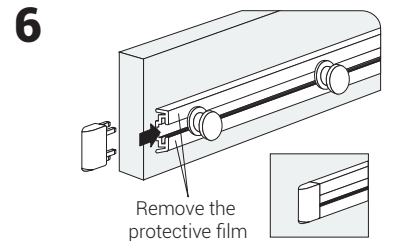


4 Secure the hanger with the screws according to the hole position.



5 Slide the hook through and turn clockwise to secure.

Load capacity per hook
*Secured with screws = 5 kg
*Secured with pins = 2 kg



6 Remove the protective film

Attach the endcap.