

- ◆ To eliminate slippery floors in showers and bathrooms.
- ◆ To reduce fall impact injuries on hard floors.



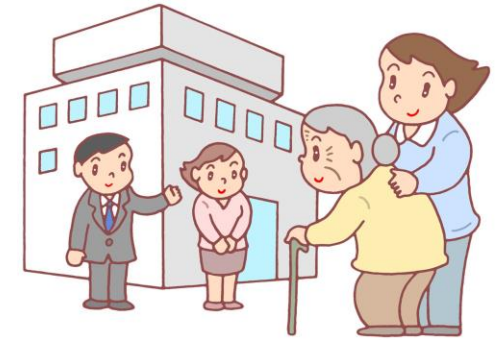
Common Installation Locations



Standalone House



Hospital



Nursing Home



Condominium



Apartment

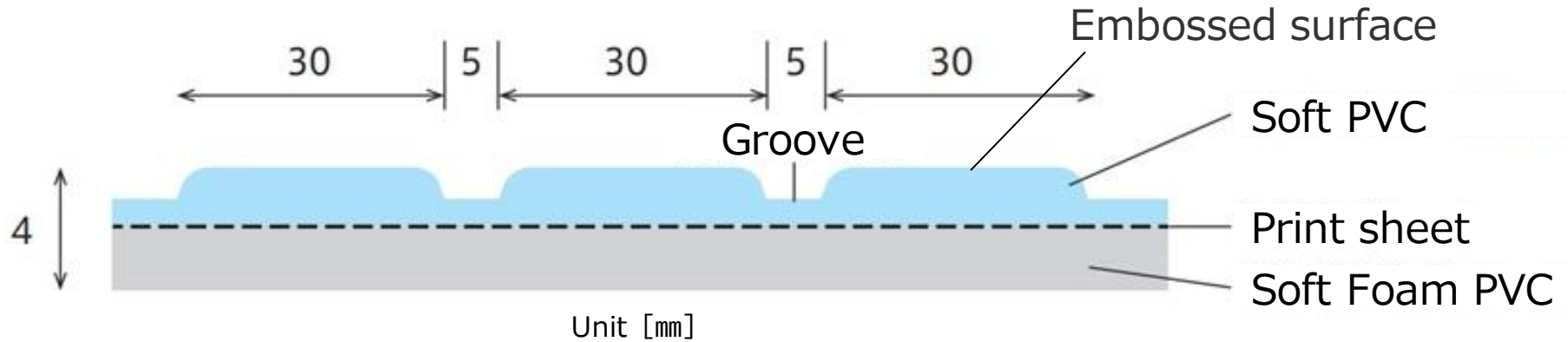


Kindergarten

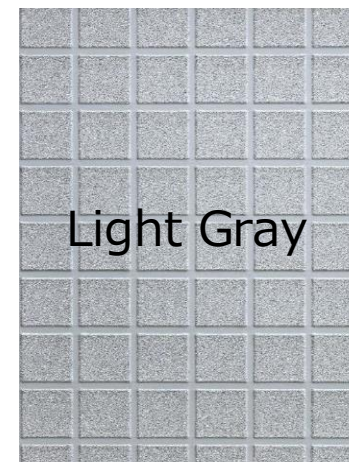


Kids Space

◆ Material and Composition



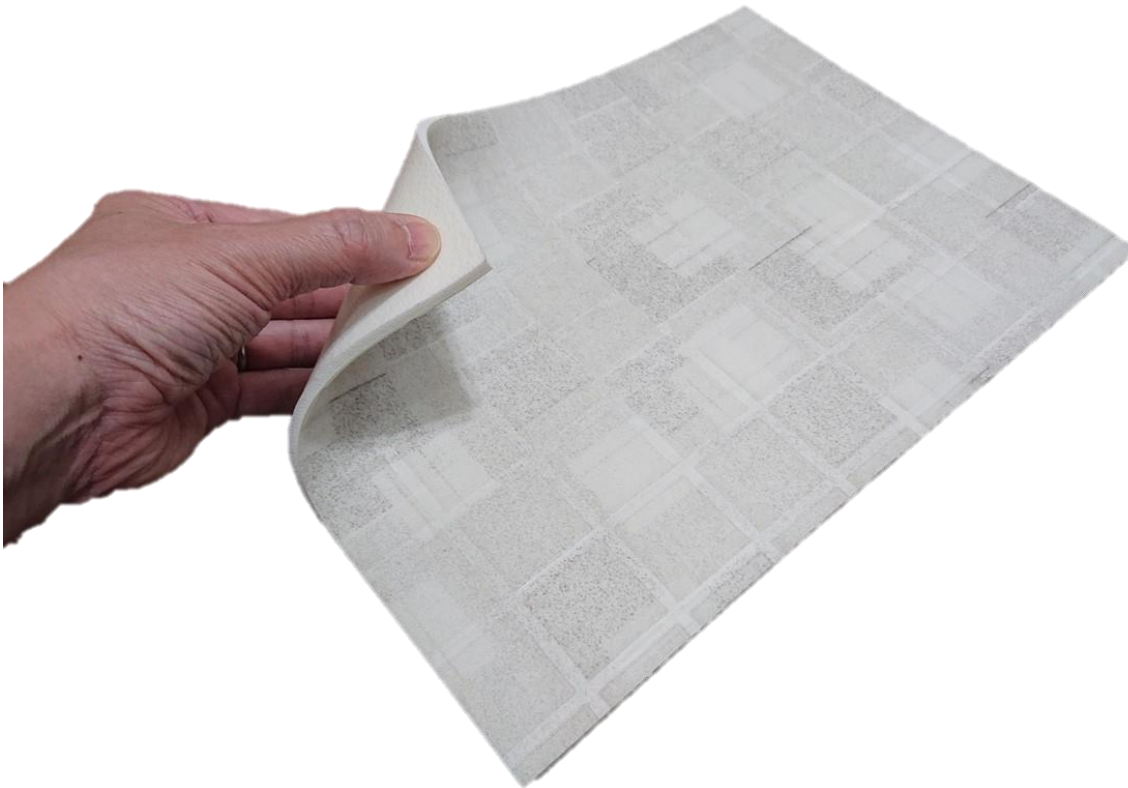
◆ Color



◆ **Size** Wide 1800mm × Length 10m (roll) × Thickness 4mm

1. Soft – Impact absorption, Comfortable environment

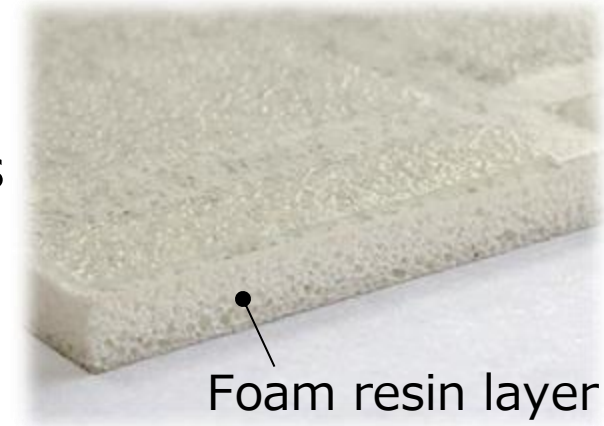
- Foam resin is used in the material's substrate
- The soft material reduces fall impact
- Comfortable to walk and stand on
- It doesn't hurt to kneel



2. Thermal Insulation

- Foam resin layer insulates from low temperatures
- It does not give you cold feet

*** Especially effective in cold regions**

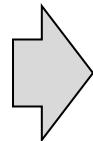


■ Thermographic Testing

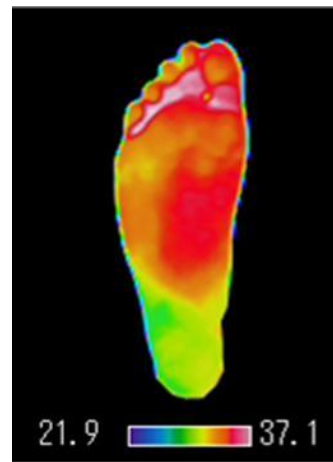
- Left : Thermographic image of the sole of a foot before testing
- Middle : Image after contact with a porcelain tile
- Right : Image after contact with ANKARA



Before testing



Porcelain tile



ANKARA



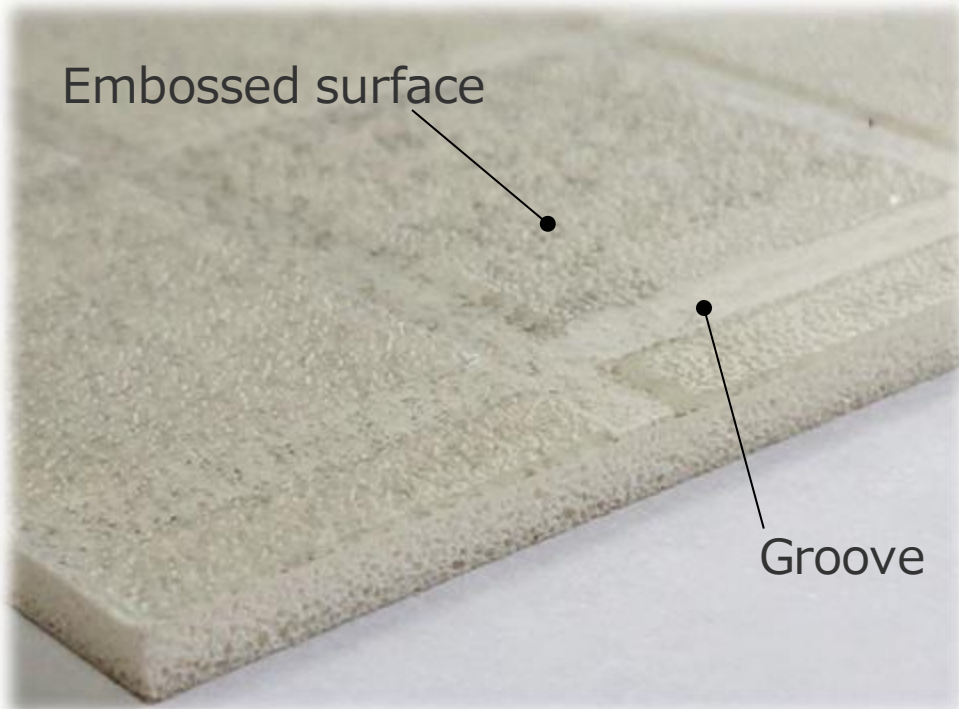
The porcelain tile and ANKARA are kept at 5°C with 20% humidity for a certain period. Thermographic images of the sole of a foot are taken after contact with the surfaces of the samples for a period of 10 seconds.

3. Anti-Slip

- Grooves and Embossing are formed onto the surface
- The design helps reduce the risk of slipping in wet or soapy conditions



Embossed surface

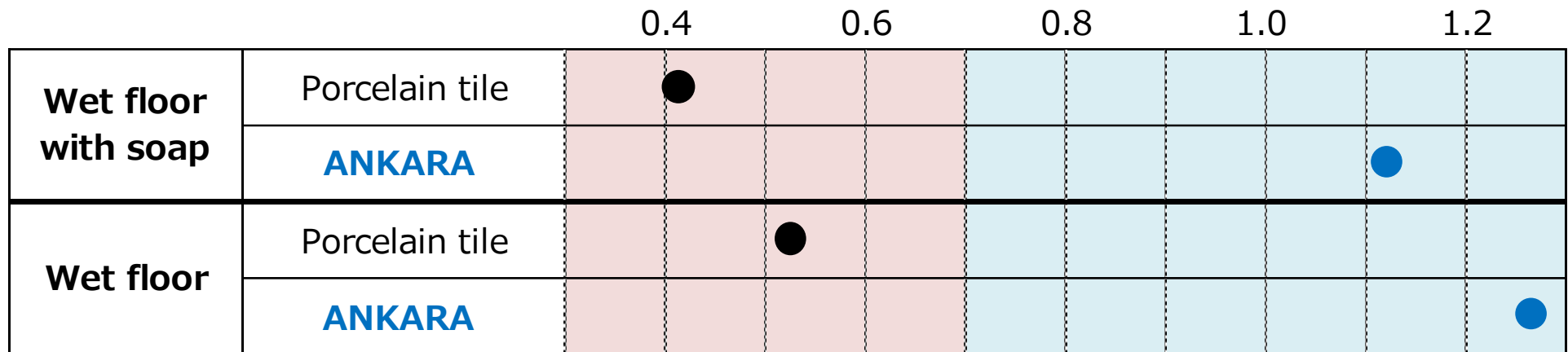


Groove



■ Barefoot Floor Slip Resistance Testing

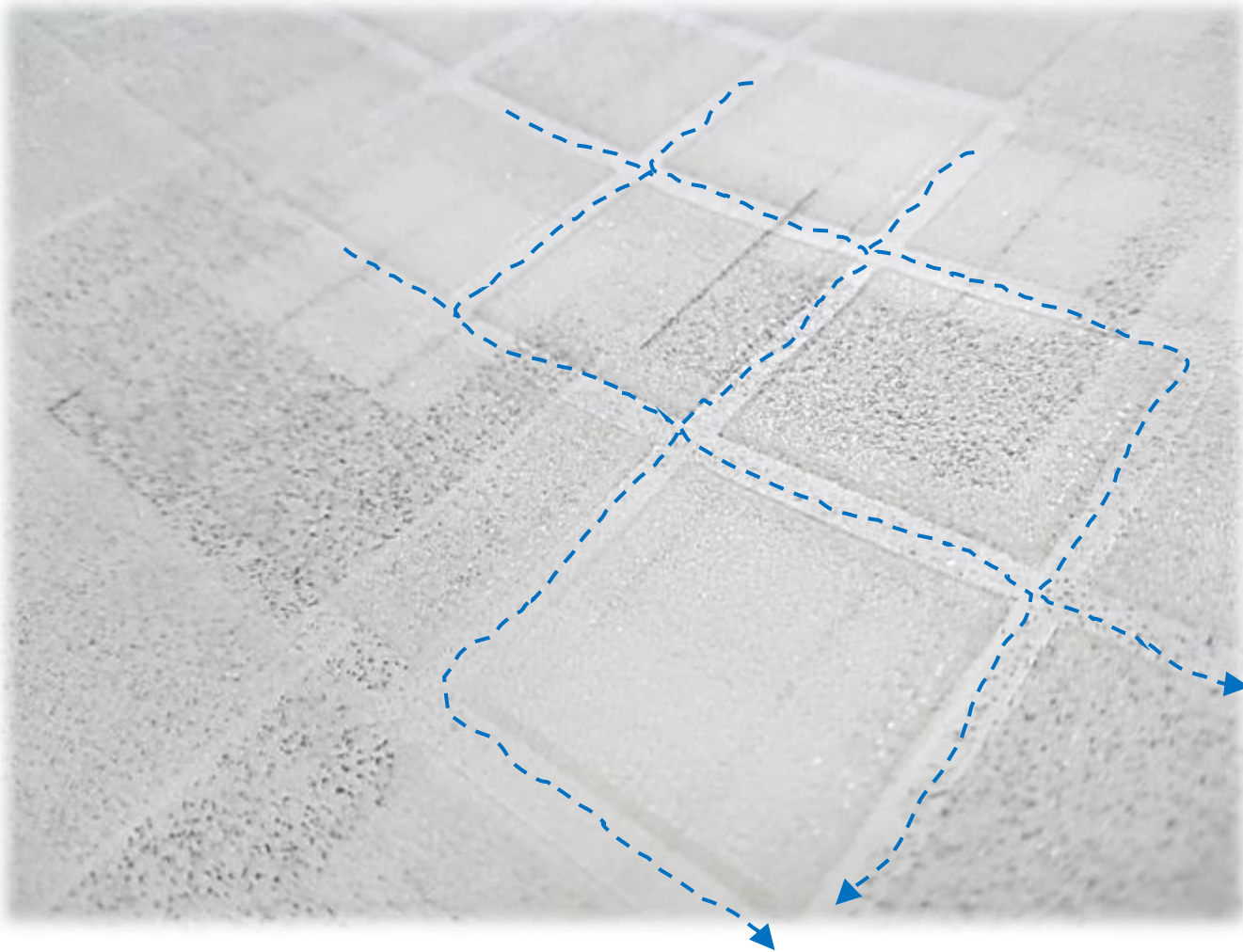
High Risk of Slip ← C.S.R·B → Low Risk of Slip



- *This test results of the flooring material satisfy the criteria of the Architectural Institute of Japan.
- *C.S.R·B is a **C**oefficient of **S**lip **R**esistance that assumes walking **B**arefoot on a wet bathroom floor.
- *Recommended value is **0.7 or above**.
- *The value of ANKARA is **1.1 or above**.

4. Quick-Drying

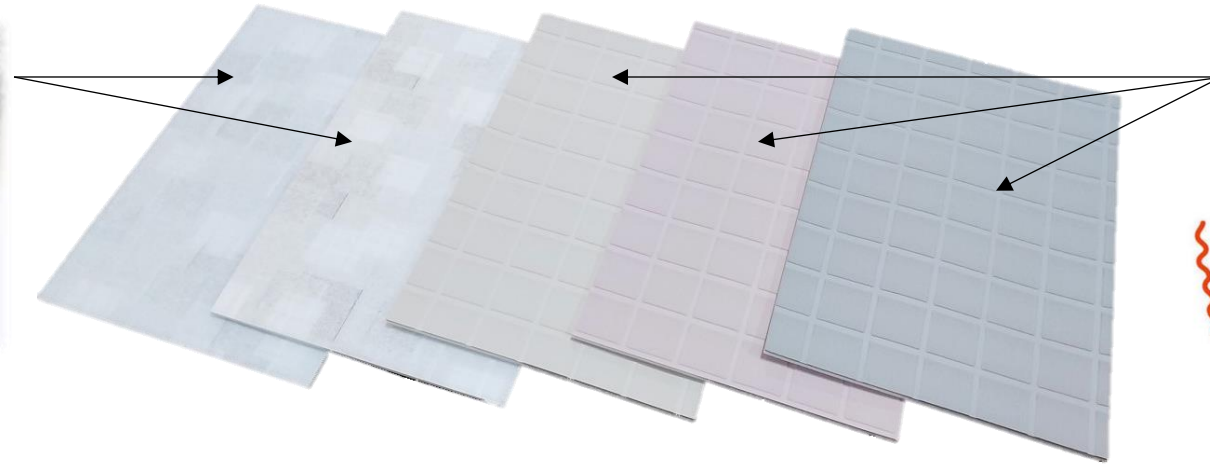
The grooved design allows water to drain easily



5. Stylish

The pattern resembles high-class granite

Warm colors



6. Repair

- Can be installed on dirty or cracked tiles
- Can be renovated quickly and easily

7. Easy Installation

- Can be cut with a box cutter
- Easy to stick to a floor base with adhesive



 <https://youtu.be/k8OI5rsN-tI>

 <https://youtu.be/OO9mHObxUdE>

Installation Example



◆ Standalone House (Japan)

Existing Floor Tile

Purpose To renovate a slippery, old and cold floor

Color White



Installation Example



◆Apartment (Japan)

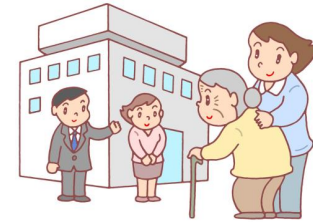
Existing Floor FRP

Purpose To renovate a slippery, dirty and faded floor

Color Gray



Installation Example



◆Nursing Home (Thailand)

Existing Floor Tile

Purpose To prevent injuries caused by falls,
which has been a common occurrence there for some time

Color White



Installation Example

※It is an image, not an actual installation



◆Hotel (Vietnam)

Existing Floor

Tile

Color

White

