

TENKENKO - T

Inspection Opening Frame

TENKENKO has been an irreplaceable line of products used in residential, commercial, and industrial construction in Japan, for decades. Designed to provide easy access to the ceiling cavity and a clean and modern finished appearance, **TENKENKO-T** is the perfect solution for any construction project. Easy installation allows for the product to be installed during new building construction or as an addition to an already finished building. **TENKENKO-T** allows for easy access to the interior of the ceiling space for inspection or future repair work. Unlike other competing products, the **TENKENKO-T** access opening frame is constructed from lightweight, yet durable, PVC material. High quality materials and strict quality control used in the manufacturing of the product ensure longevity and reliability our customers can depend on. Meticulously designed and tested to meet the rules and regulations, and the high expectations of the international market.

Features



Quick Installation
Easy 7-Step Installation



Lightweight
Designed to be lightweight



PVC
Made of PVC material with stable physical properties



Easy Access
Easy access to interior with simple open/close method



Paint/Wallpaper
Compatible with painted & wallpapered wall board



Clean/Straight Lines
Perfectly hides unfinished & uneven edges at opening area



MADE IN VIETNAM

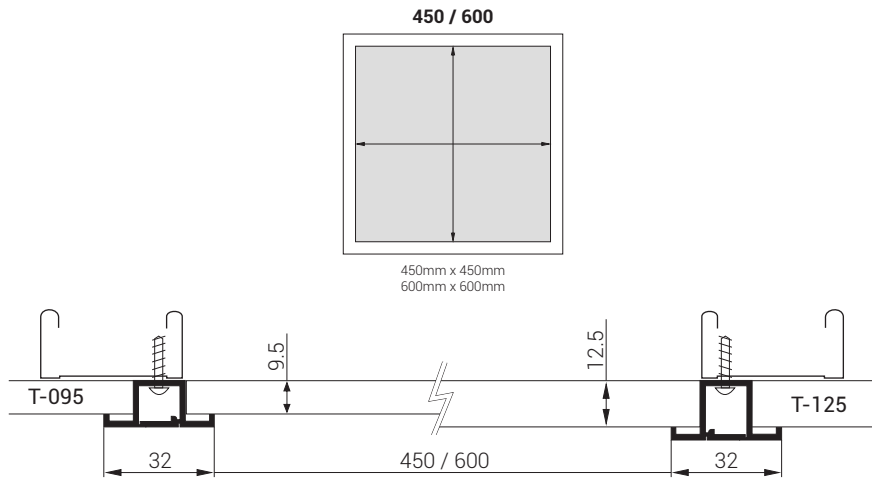


Product List

Model	Design	Dimensions	Color	MOQ
TENKENKO - T	095 - 450	450mm x 450mm	White	25pcs
	095 - 600	600mm x 600mm		25pcs
	125 - 450	450mm x 450mm		25pcs
	125 - 600	600mm x 600mm		25pcs

Note: The dimensions listed for this product are the dimensions of the usable opening after installation. The cut in the installation surface, prior to installation, will require an additional 50mm to be added to each dimension, i.e. version 125-600 requires a cut opening of 650x650mm for a finished usable opening of 600x600mm.

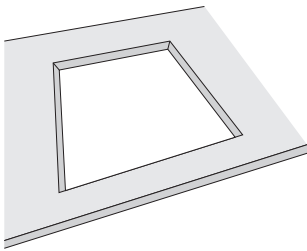
Model Design



Note: The 2 sizes (450 & 600) are available in 2 different configurations, 1 for use with 9.5mm board and 1 for use with 12.5mm board.

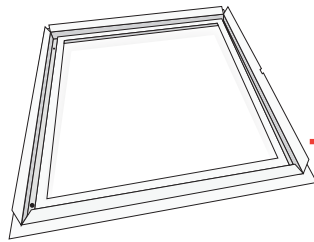
Installation Guide

1

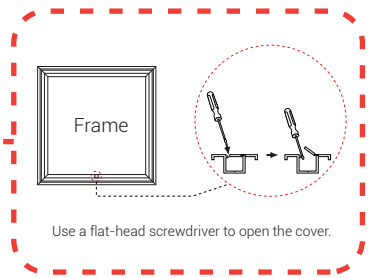


Cut an opening in the ceiling board to the appropriate size.
450 - 500x500mm
600 - 650x650mm

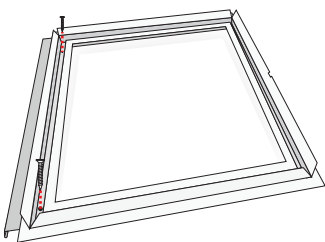
2



Open frame cover.

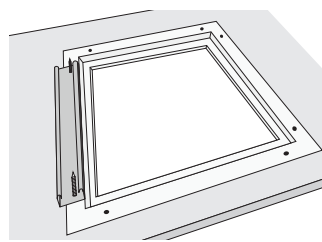


3

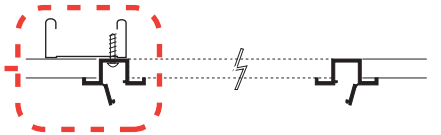


Set the supporting beam on top of the frame and attach directly with 2 screws.

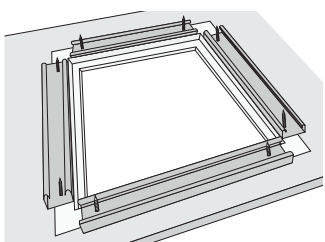
4



Insert TENKENKO-T, with the beam attached, into the opening and use the beam to hold the frame within the opening.

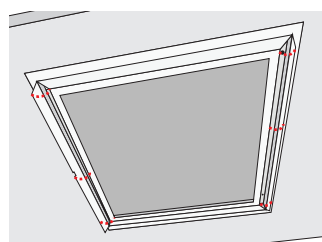


5



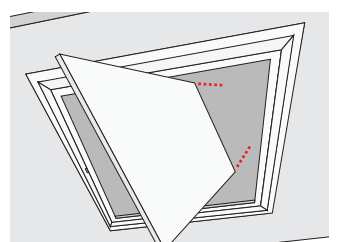
Attach a beam to each remaining side with 2 screws, for a total of 4 beams and 8 screws.

6



Close frame cover to hide the screws.

7



Install the lid.